

CITATION CLUB REPLAT

BEING A REPLAT OF A PORTION OF CITATION CLUB AS RECORDED IN PLAT BOOK 76,
 PAGES 181 THROUGH 187, PUBLIC RECORDS OF PALM BEACH COUNTY, FLORIDA AND
 A PORTION OF SECTION 25, TOWNSHIP 46 SOUTH, RANGE 42 EAST,
 CITY OF DELRAY BEACH, PALM BEACH COUNTY, FLORIDA.
 SHEET 2 OF 8 SHEETS MAY, 1998

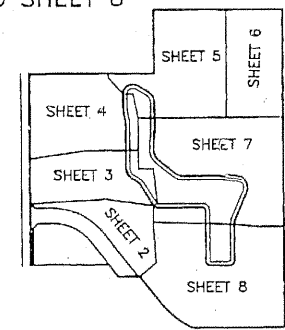
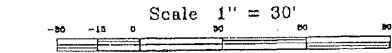
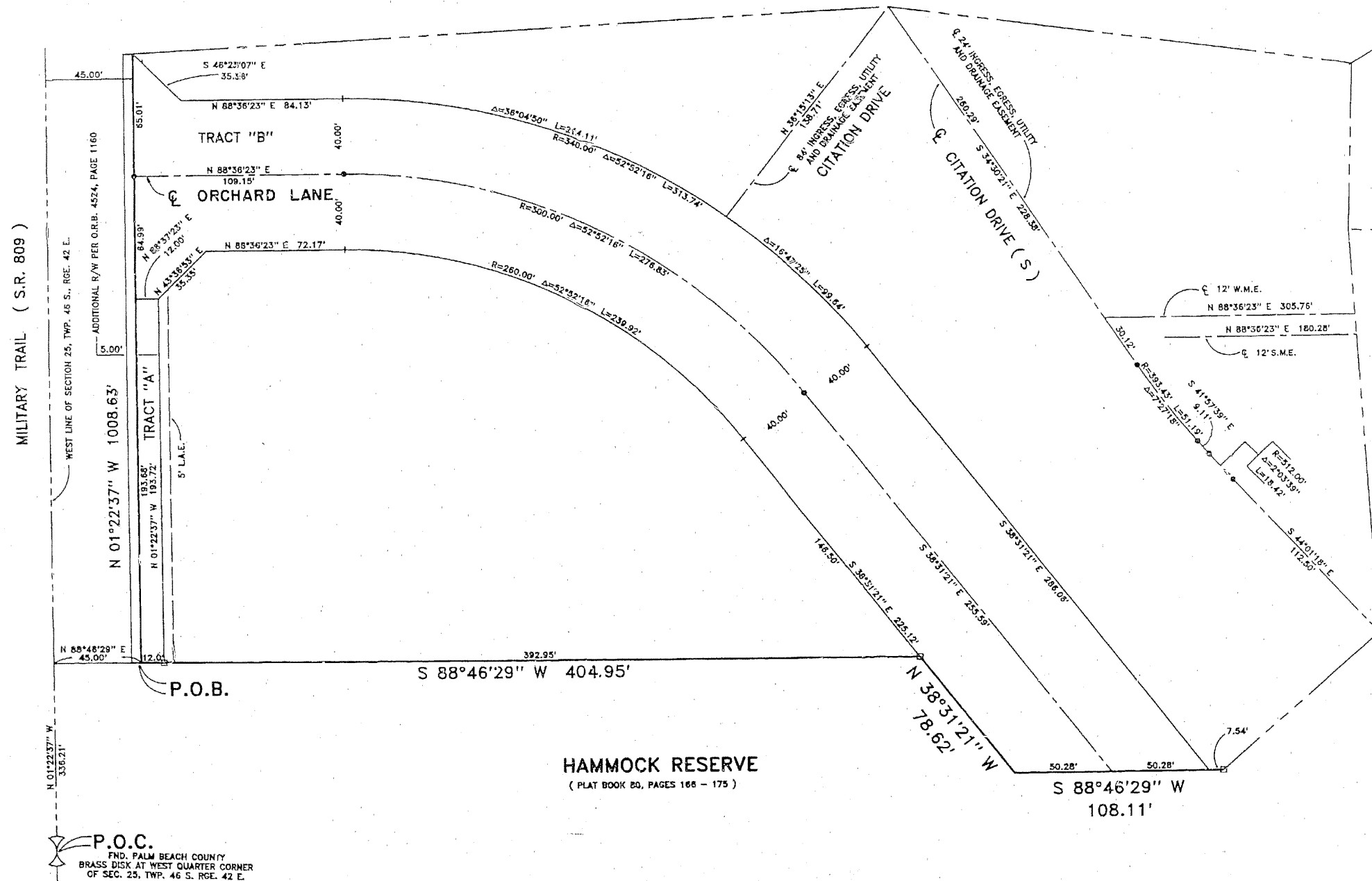
128

STATE OF FLORIDA
 COUNTY OF PALM BEACH
 This Plat was filed for record at _____
 M. This day of _____, 19____
 and duly recorded in Plat Book No. _____
 on Page _____
 Dorothy H. Wiken, Clerk of the Circuit Court,
 By _____ D.C.

MATCH TO SHEET 3

MATCH TO SHEET 7

MATCH TO SHEET 8



Landmark Surveying & Mapping Inc.
 1850 FOREST HILL BOULEVARD
 PH. (561)433-5405 SUITE 100 W.P.B. FLORIDA

CITATION CLUB REPLAT